

# Who am I?

## **Activity**

Family members can work at many different kinds of jobs. Spend a few minutes discussing with your kids a few jobs held by your family members or friends.

Share with your kids you are going to play the guessing game "Who am I"? Let them know you are going to give them three clues and then they will have the chance to try to guess the correct job. Tell them to wait until you give them all three clues *before* they choose a job.

If your child is unable to guess the job, you can make up a few additional clues or share the answer with them and move on to the next job.

# JA Our Families®

**Clue 1:** You are needed when someone is sick or hurt.

**Clue 2:** You may work in a hospital.

**Clue 3:** You write prescriptions for medicine.

## Who are you?

# Doctor



# JA Our Families®

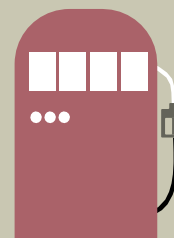
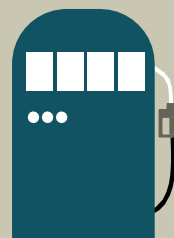
**Clue 1:** You are a person who fixes cars and trucks.

**Clue 2:** You work with tools and car parts.

**Clue 3:** You can be found in a neighborhood garage or shop.

## Who are you?

# Mechanic



# JA Our Families®

**Clue 1:** You help children read, write, and do math.

**Clue 2:** You grade papers.

**Clue 3:** You talk to parents on conference day.

## Who are you?

# Teacher



# JA Our Families®

**Clue 1:** You rush to put out fires.

**Clue 2:** You may drive a big red or yellow truck.

**Clue 3:** You are trained to save lives.

## Who are you?



# Firefighter



# JA Our Families®

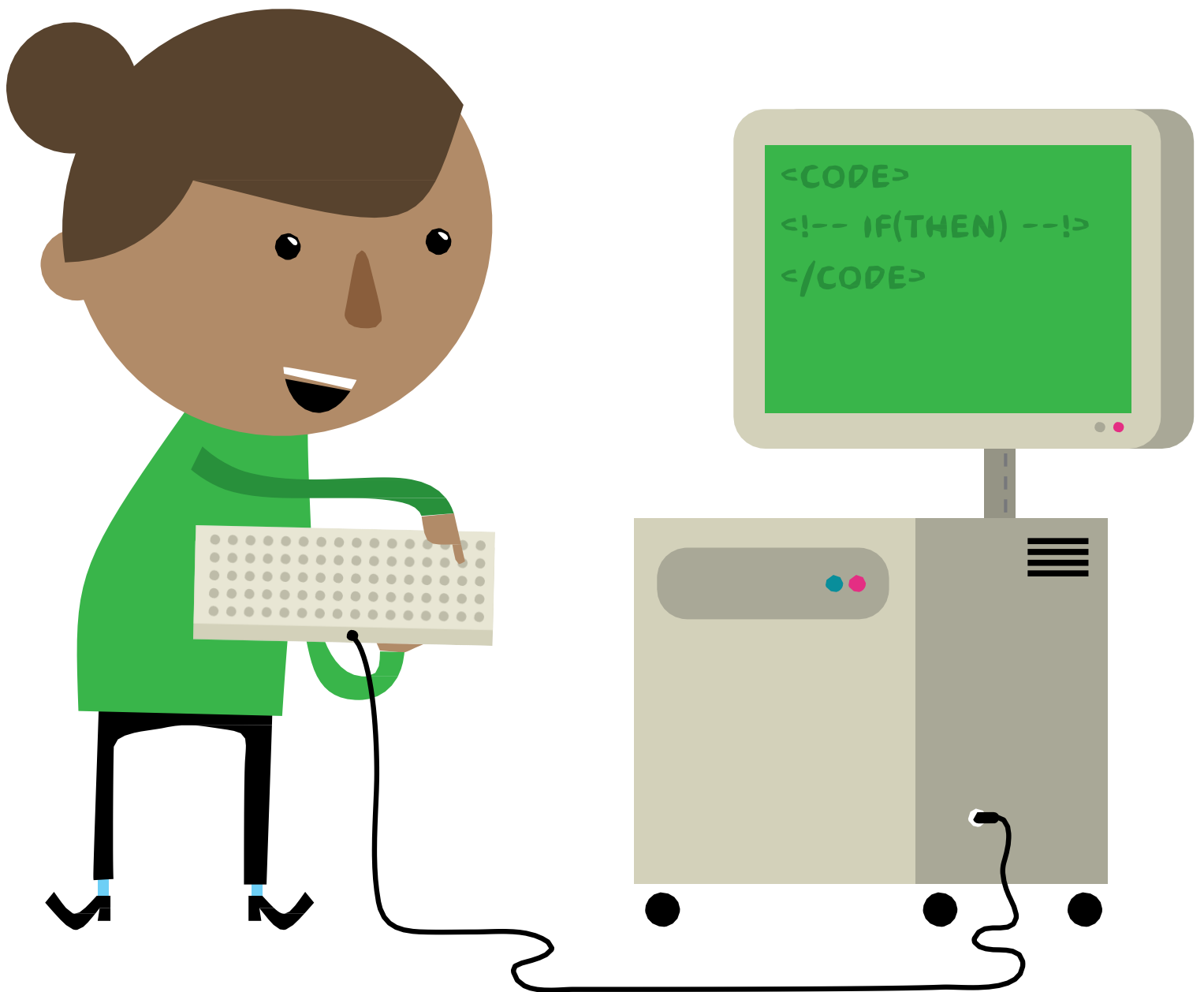
**Clue 1:** You create software for games.

**Clue 2:** You work with laptops and tablets.

**Clue 3:** You work for businesses like  
Nintendo and Apple.

## Who are you?

# Video Game Designer



# JA Our Families®

**Clue 1:** You make things like breads, cakes, or cookies.

**Clue 2:** You use mixers, measuring cups, and spoons.

**Clue 3:** You like to feed hungry people.

## Who are you?

# Baker or Chef



# JA Our Families®

**Clue 1:** You fly airplanes and helicopters.

**Clue 2:** You help people travel from one place to another.

**Clue 3:** You look at maps and weather reports.

## Who are you?

# Pilot



# JA Our Families®

**Clue 1:** You are an animal doctor.

**Clue 2:** You work in an office, farm, or zoo.

**Clue 3:** You help animals large and small.

## Who are you?



# Veterinarian

